

£1.400,000

Gloucester Place, Marylebone, W1U



3 Bedrooms



2 Bathrooms



1 Reception



Patio Garden

Bright, three double bedroom apartment set in this Georgian Building with internal private courtyard.

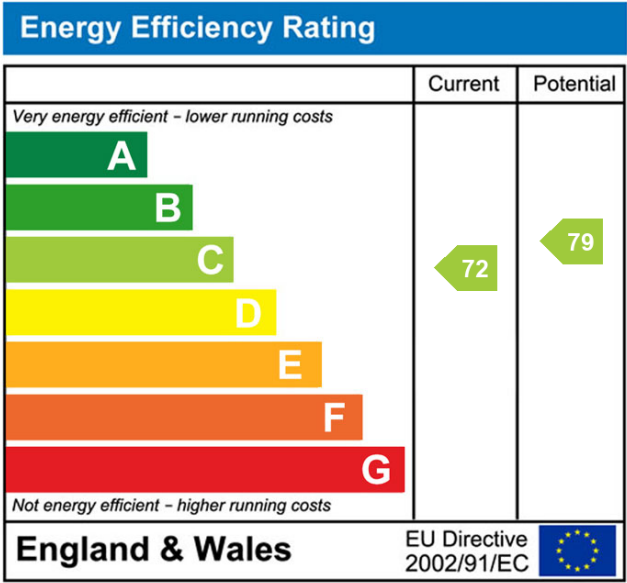
In excellent condition this unique three bedroom apartment offers extremely bright and spacious accommodation, an internal private courtyard, modern Poggenpohl Kitchen and totals approximately 1157 sq ft (107.5Sqm). With full bathroom and shower room wc, L shaped reception with french doors opening onto the internal courtyard.

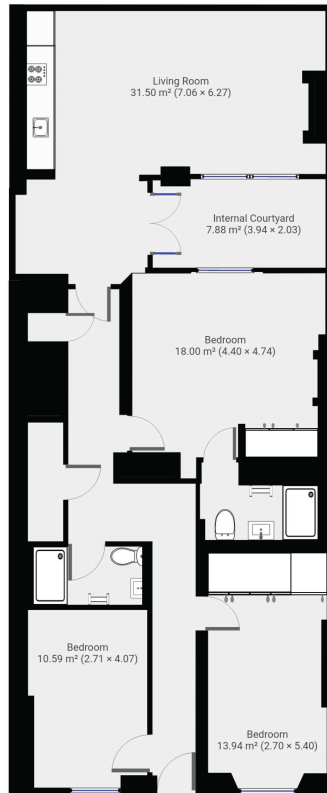
Holmes Court is a well looked after Georgian house, located a short distance from the West End, Regents Park and the numerous restaurants and boutiques of Marylebone High Street.

- ✓ Entrance Hall
- ✓ L shaped Reception Room
- ✓ 3 Double Bedrooms
- ✓ Full Bathroom & Shower Room /wc
- ✓ Modern Fitted Kitchen
- ✓ Internal Courtyard
- ✓ Excellent Condition
- ✓ Under Street Storage
- ✓ 992 years approximately
- ✓ Council Tax Band G Westminster









Disclaimer: Floorplan Measurements are provided as approximate and are for illustrative purposes only.  
While we do not doubt the accuracy and completeness of the floorplans, you or your advisors should conduct a careful, independent investigation of the property in respect of monetary valuation.