

£1.295,000

Gloucester Place, Marylebone, W1U



3 Bedrooms



2 Bathrooms



1 Reception



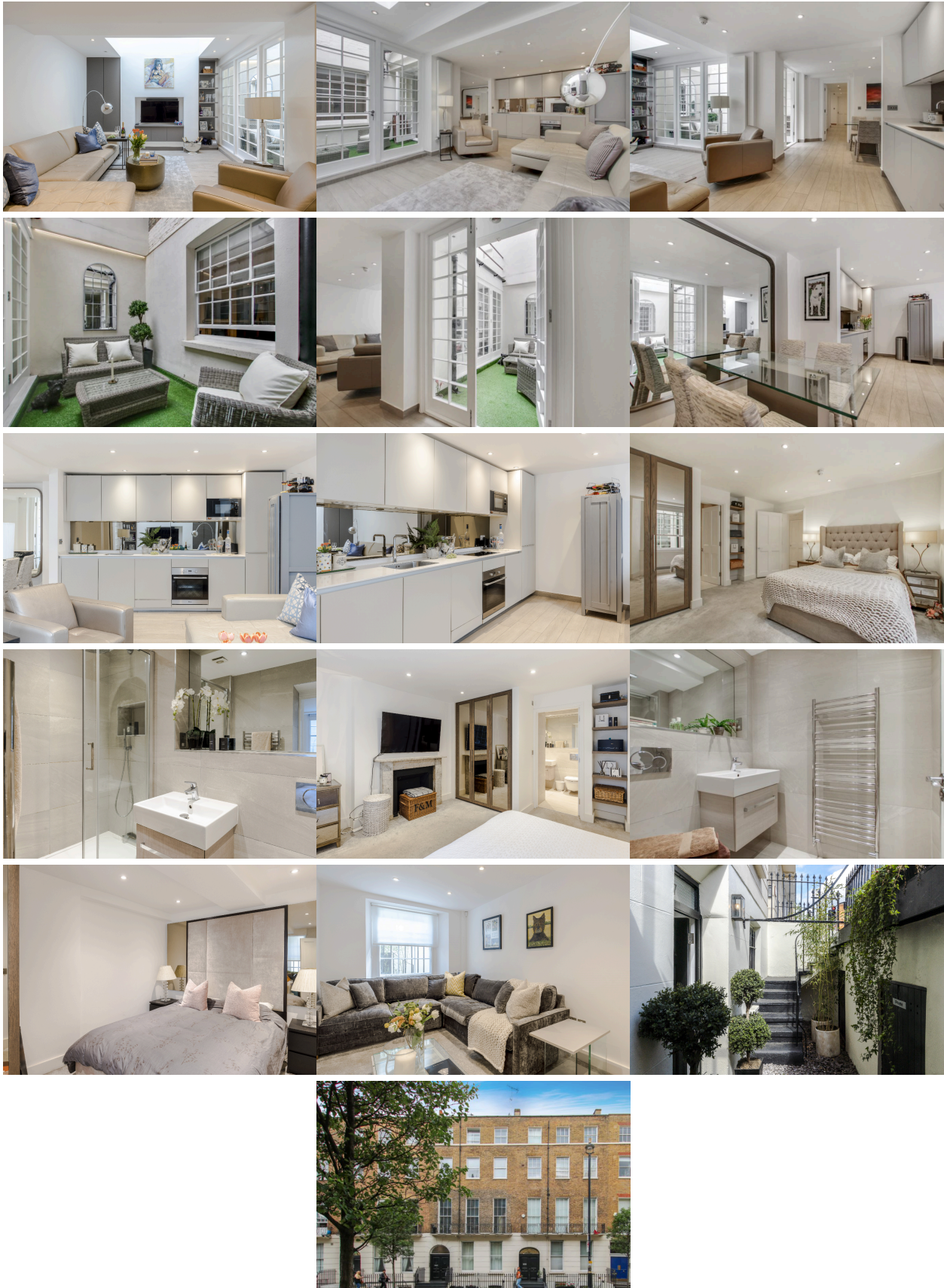
Patio Garden

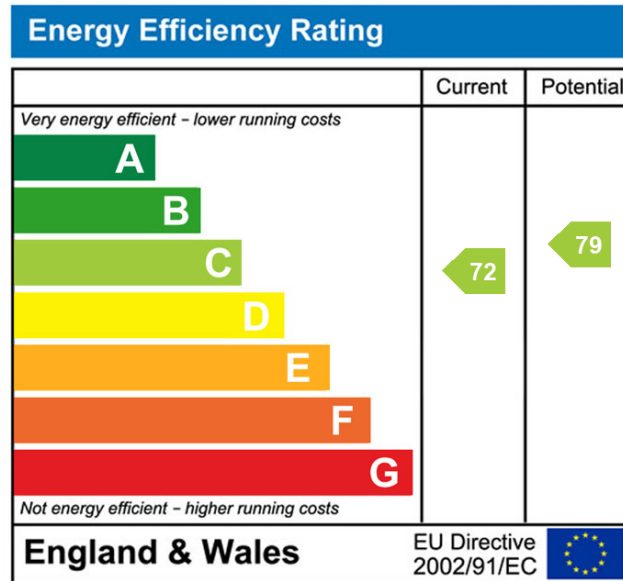
Bright, three double bedroom apartment set in this Georgian building with internal private courtyard.

In excellent condition, this unique three bedroom apartment offers extremely bright and spacious accommodation, an internal private courtyard, modern Poggenphol Kitchen and totals approximately 1157 sq ft (107.5 sqm). With 2 full shower rooms, L shaped reception room with French doors opening onto an internal courtyard, viewing is a must.

Holmes Court is a well looked after Georgian house, located a short distance from the West End, Regents Park and the numerous restaurants and boutiques of Marylebone High Street.

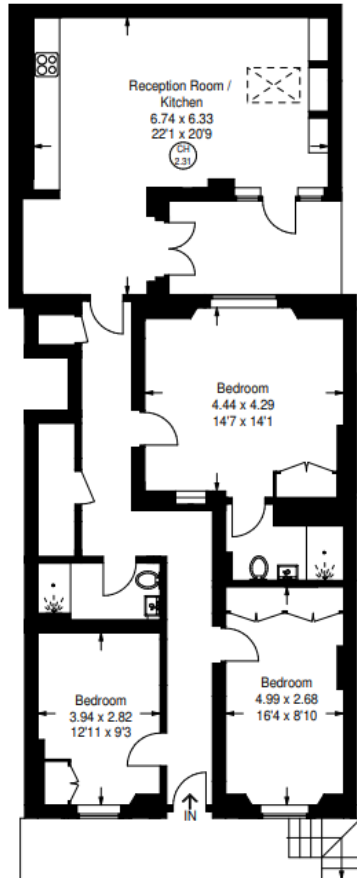
- ✓ Entrance Hall
- ✓ L Shaped Reception Room
- ✓ 3 Double Bedrooms
- ✓ 2 Shower Rooms
- ✓ Modern Fitted Kitchen
- ✓ Internal Courtyard
- ✓ Excellent Condition
- ✓ Under Street Storage
- ✓ 992 years approximately
- ✓ Service Charge £4924.26 for current year





Gloucester Place

Approximate Gross Internal Area
111.6 sq m / 1201 sq ft



Lower Ground Floor

Illustration for identification purposes only,
measurements are approximate, not to scale.
FloorplansUsketch.com © 2022 (ID 862746)