

£850.00 pw (£3,683.33 pcm)

Marble Arch Apartments, Marylebone, W1H



3 Bedrooms



1 Bathroom



1 Reception

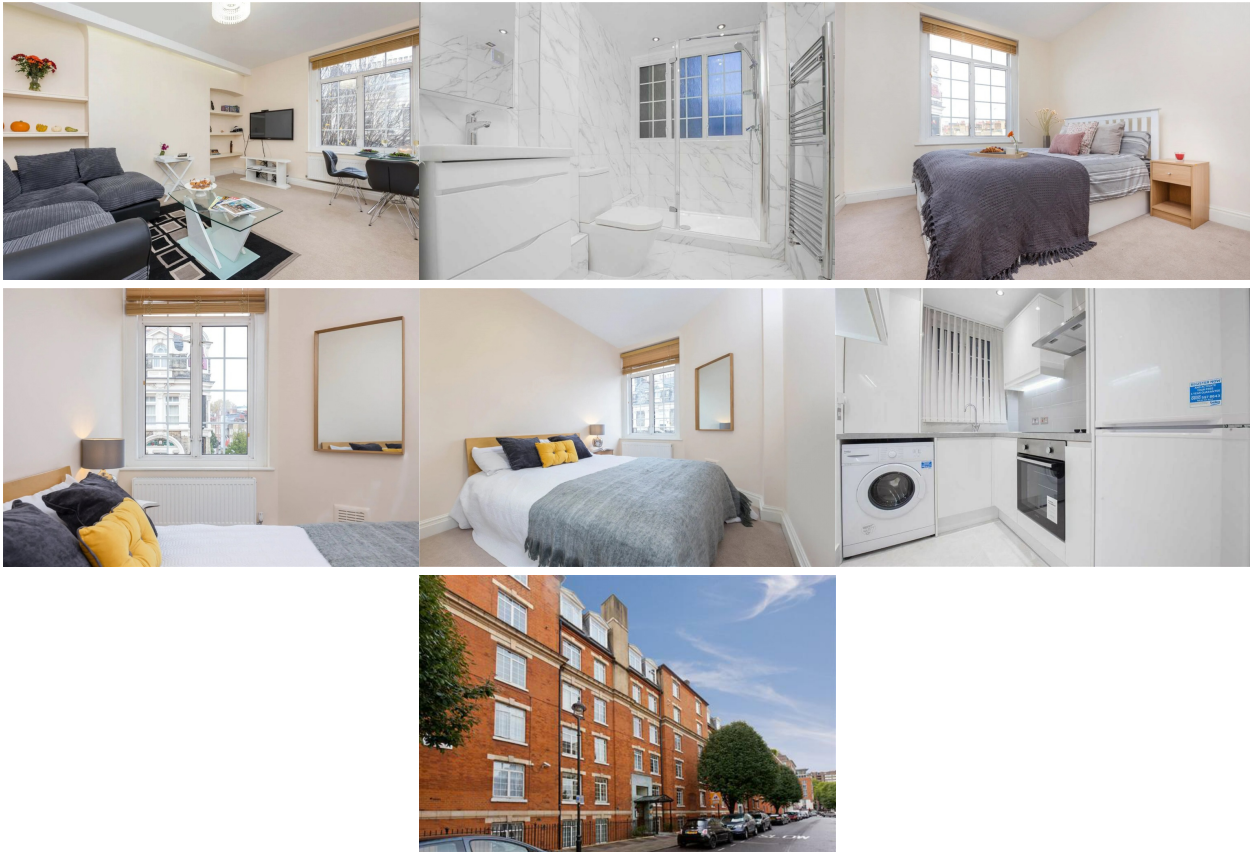
Bright & Spacious 3 double bedroom apartment for rent in the 24 hour portered block, Marble Arch Apartments W1H


Charming and bright 3 double bedroom apartment available for rent TO FAMILIES or RELATIONS ONLY. This apartment has been well looked after and offers spacious rooms, all bedrooms have fitted wardrobes. A modern fitted kitchen, spacious walk in shower room and reception/dining room. Set in a twenty four hour portered block. Available September 2023. UNABLE TO ACCEPT SHARERS


Centrally located being a 10 minute walk to Oxford Street, Baker Street and Marble Arch. Good range of supermarkets close by together with restaurants, coffee shops and local shops.

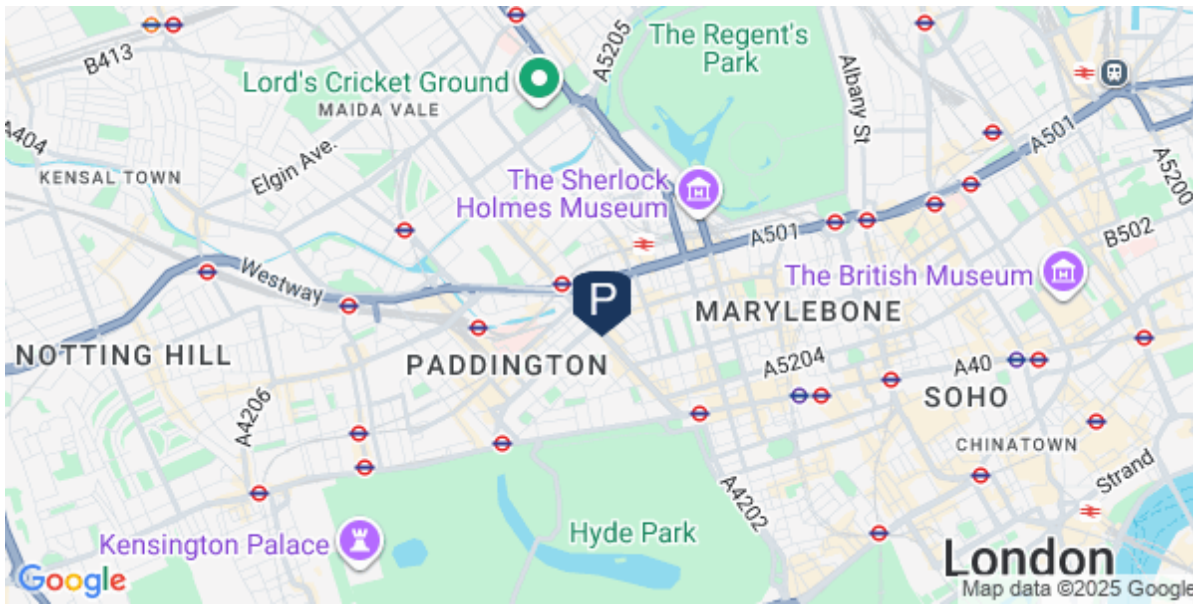
- ✓ Entrance Hall
- ✓ Reception/Dining Room
- ✓ 3 Double Bedrooms
- ✓ 1 walk in Shower Room
- ✓ Fully Fitted & Equipped Kitchen
- ✓ Wood Flooring
- ✓ Excellent Condition
- ✓ 24 Hour Portered Block
- ✓ Council Tax Band F
- ✓ FAMILIES ONLY (Unable to accept sharers)

Viewing recommended.



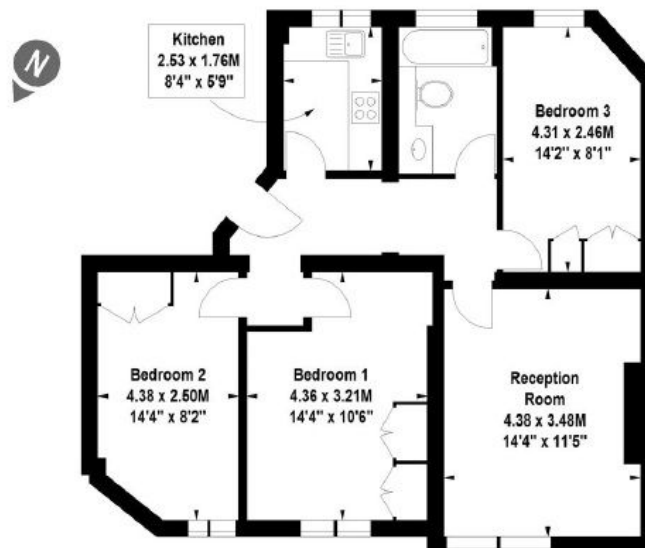
Energy Efficiency Rating		
	Current	Potential
Very energy efficient - lower running costs		
A		
B		
C		
D		
E		
F		
G		
Not energy efficient - higher running costs		
	70	77
England & Wales	EU Directive 2002/91/EC 	

Environmental Impact (CO ₂) Rating		
	Current	Potential
Very environmentally friendly - lower CO ₂ emissions		
A		
B		
C		
D		
E		
F		
G		
Not environmentally friendly - higher CO ₂ emissions		
	72	81
England & Wales	EU Directive 2002/91/EC 	



Marble Arch Apartment, W1H

Approximate gross internal area 71.25 sq m / (767 sq ft)



Second Floor

Illustration for identification purposes only, not to scale
All measurements are maximum, and include wardrobes and window bays where applicable