

**£625.00 pw** (£2708.33 pcm)

**Harrowby Street, Marylebone, W1H**



2 Bedrooms



1 Bathroom



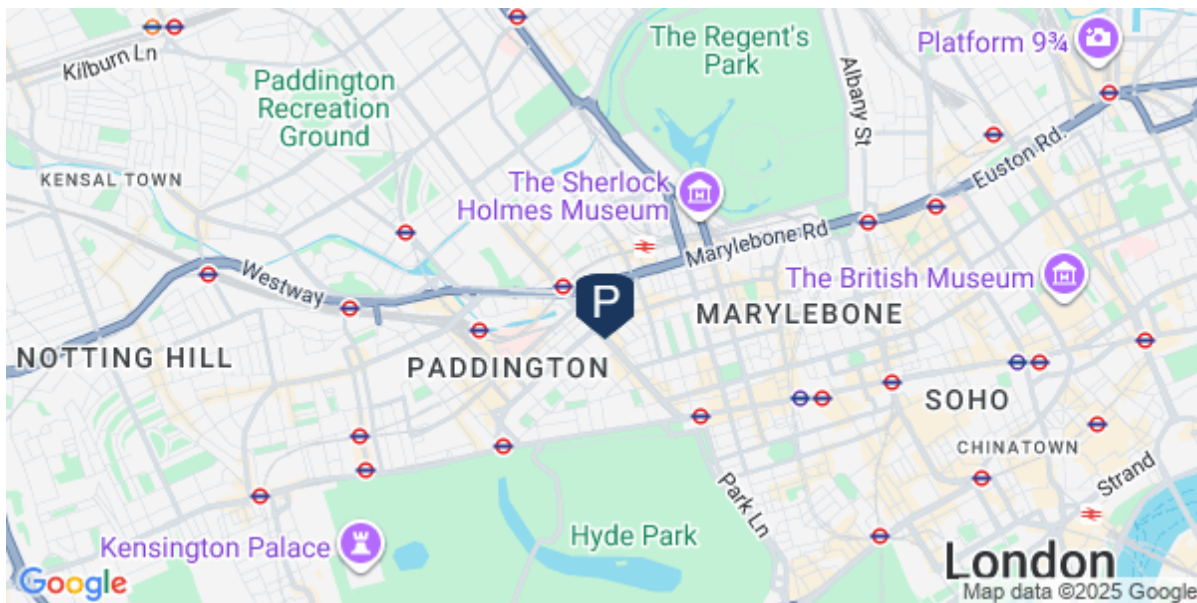
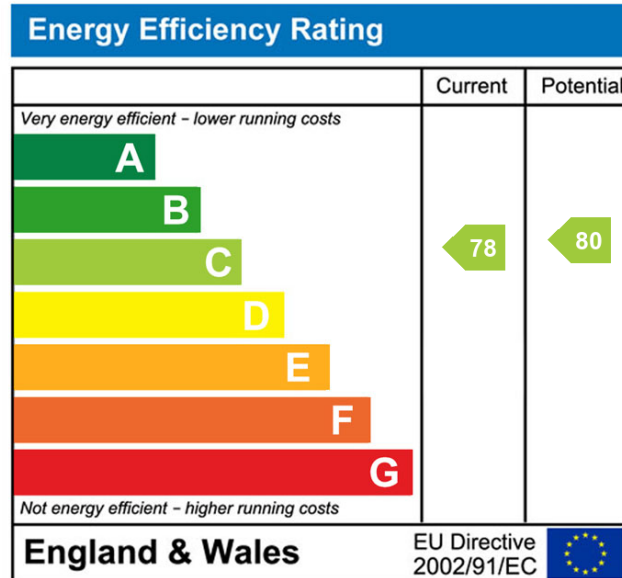
1 Reception

### Bright 2 double bedroom flat to rent in W1H

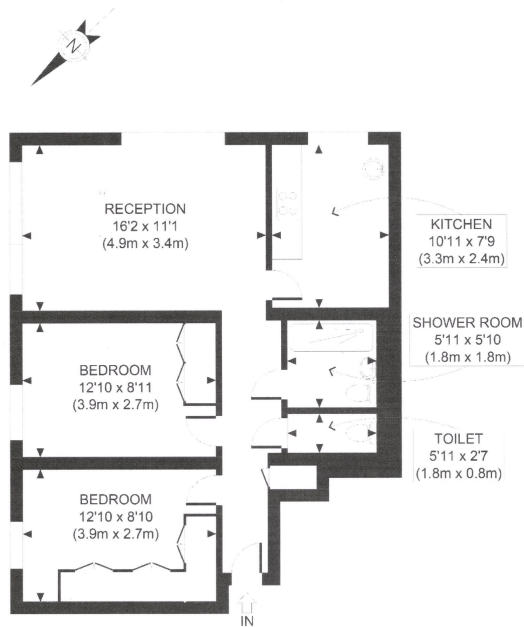
Situated in a portered block, this 2 double bedroom apartment is offered for rent in good condition, with fitted cupboards in both bedrooms, wood flooring, fitted kitchen, full bathroom and guest cloakroom. Good size reception room with large windows giving lots of light.

This portered block is ideally located for excellent amenities on Edgware Road, being a ten minute walk to Marble Arch and Baker Street.

- ✓ LONG LEASE
- ✓ Reception/Dining Room
- ✓ 2 Double Bedrooms
- ✓ Fitted Kitchen
- ✓ Bathroom/wc
- ✓ Guest Cloakroom
- ✓ Plenty of Storage
- ✓ Entry Phone System
- ✓ Portered Block
- ✓ Centrally Located



Landward Court Harrowby Street London W1H 5HT



650 square feet

60 square meters