

£725,000

Landward Court, Marylebone, W1H



3 Bedrooms



2 Bathrooms



1 Reception

Bright and Spacious 3 Double Bedroom Apartment for Sale in Landward Court W1H

Totalling approximately 870 sq ft, this 3 bedroom, 2 bathroom apartment set in a purpose built block with day porter is offered for sale with vacant possession. The apartment has large windows giving lots of light, modern kitchen, plenty of storage, spacious reception/dining room.

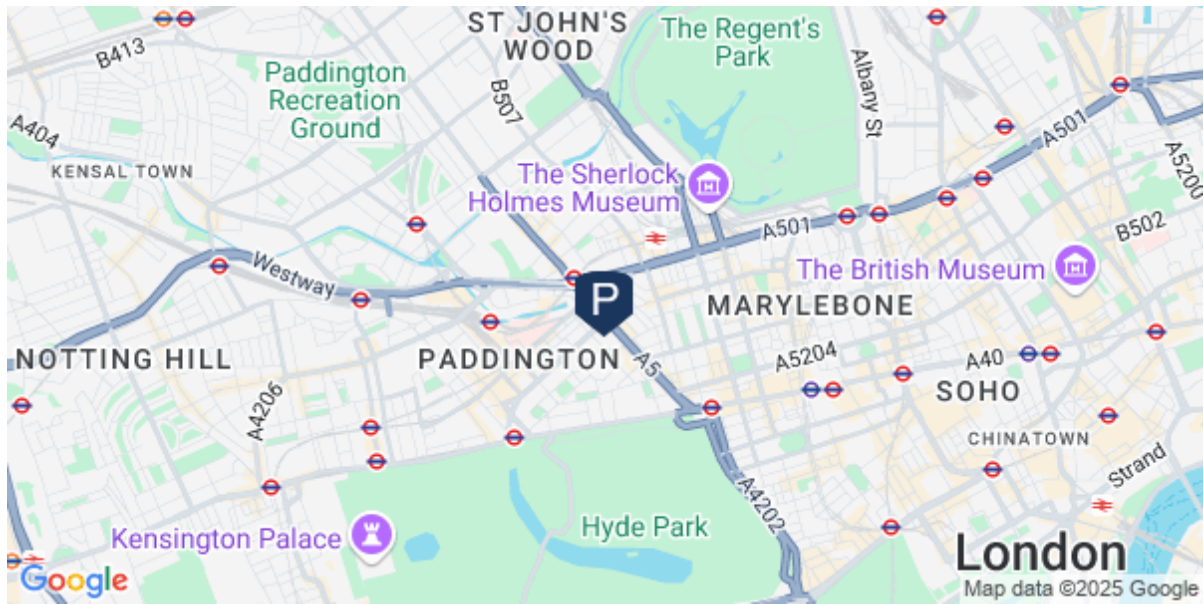
Landward Court W1H is located on the corner of Harrowby Street and Brendon Street W1H. A ten minute walk to Baker Street, Marble Arch and Hyde Park. Nearest Underground Station is Edgware Road. Marylebone and Paddington Main Line station close by. Supermarkets, coffee shops and restaurants all within walking distance.

- ✓ Entrance Hall
- ✓ Double Reception Room
- ✓ 3 Double Bedrooms
- ✓ Family Bathroom
- ✓ Shower Room/wc
- ✓ Entry Phone System
- ✓ Day Porter
- ✓ Modern Purpose Built Block
- ✓ £7034.00 Approx Service Charge
- ✓ £700 pa Ground Rent

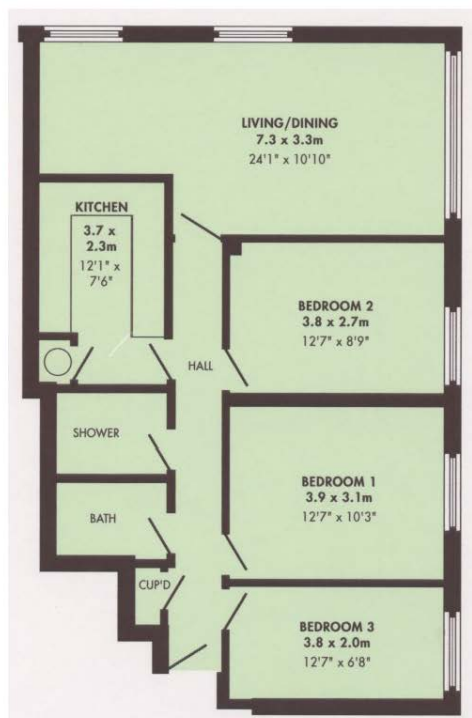


Energy Efficiency Rating

	Current	Potential
Very energy efficient – lower running costs		
A		
B		
C	76	82
D		
E		
F		
G		
Not energy efficient – higher running costs		
England & Wales	EU Directive 2002/91/EC	



The Landward Apartments



870 Square feet
81 Square Metres