

**£285 pw** (£1234 pcm)

**Harrowby Street, Marylebone, W1H**



Studio



1 Bathroom



1 Reception

Bright and spacious double studio apartment offered for rent in good condition and set in Marble Arch Apartments, a twenty four hour portered block located on Harrowby Street, close to excellent shopping and transport at Edgware Road and Marble Arch.

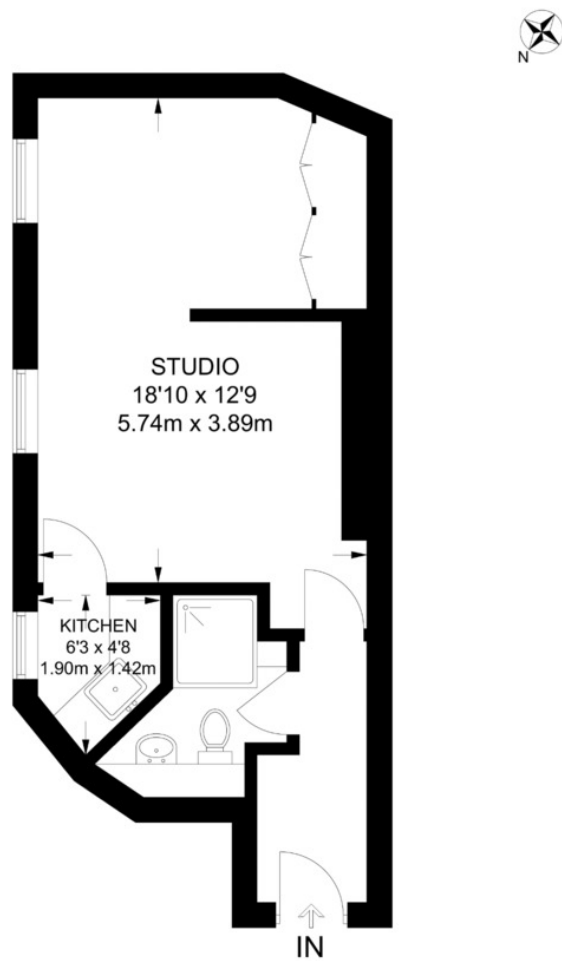
This apartment is both bright and spacious for a double studio and is fully fitted and equipped to a good standard and is quietly set to the rear of the building.

- ✓ Entrance Hall
- ✓ Double Studio Room (partially separated)
- ✓ Reception area
- ✓ Bedroom area
- ✓ Fitted Kitchen
- ✓ Tiled Shower Room
- ✓ Wood Flooring
- ✓ 24 Hour Portered Block



Energy Efficiency Rating			Environmental Impact (CO <sub>2</sub> ) Rating		
	Current	Potential		Current	Potential
Very energy efficient - lower running costs			Very environmentally friendly - lower CO <sub>2</sub> emissions		
A			A		
B			B		
C			C		
D			D		
E			E		
F			F		
G			G		
Not energy efficient - higher running costs			Not environmentally friendly - higher CO <sub>2</sub> emissions		
	70	77		72	81
England & Wales	EU Directive 2002/91/EC		England & Wales	EU Directive 2002/91/EC	





## THIRD FLOOR

APPROXIMATE GROSS INTERNAL AREA  
357 SQ FT / 33.2 SQ M